



2 Dahlia Close, Ashcroft Road, Luton, Beds, LU2 9AT

Occupying a desirable position within a private cul-de-sac on Dahlia Close, just off Ashcroft Road, this spacious and well maintained three bedroom bungalow offers an outstanding opportunity to acquire a substantial home in one of Stopsley's most sought after locations.

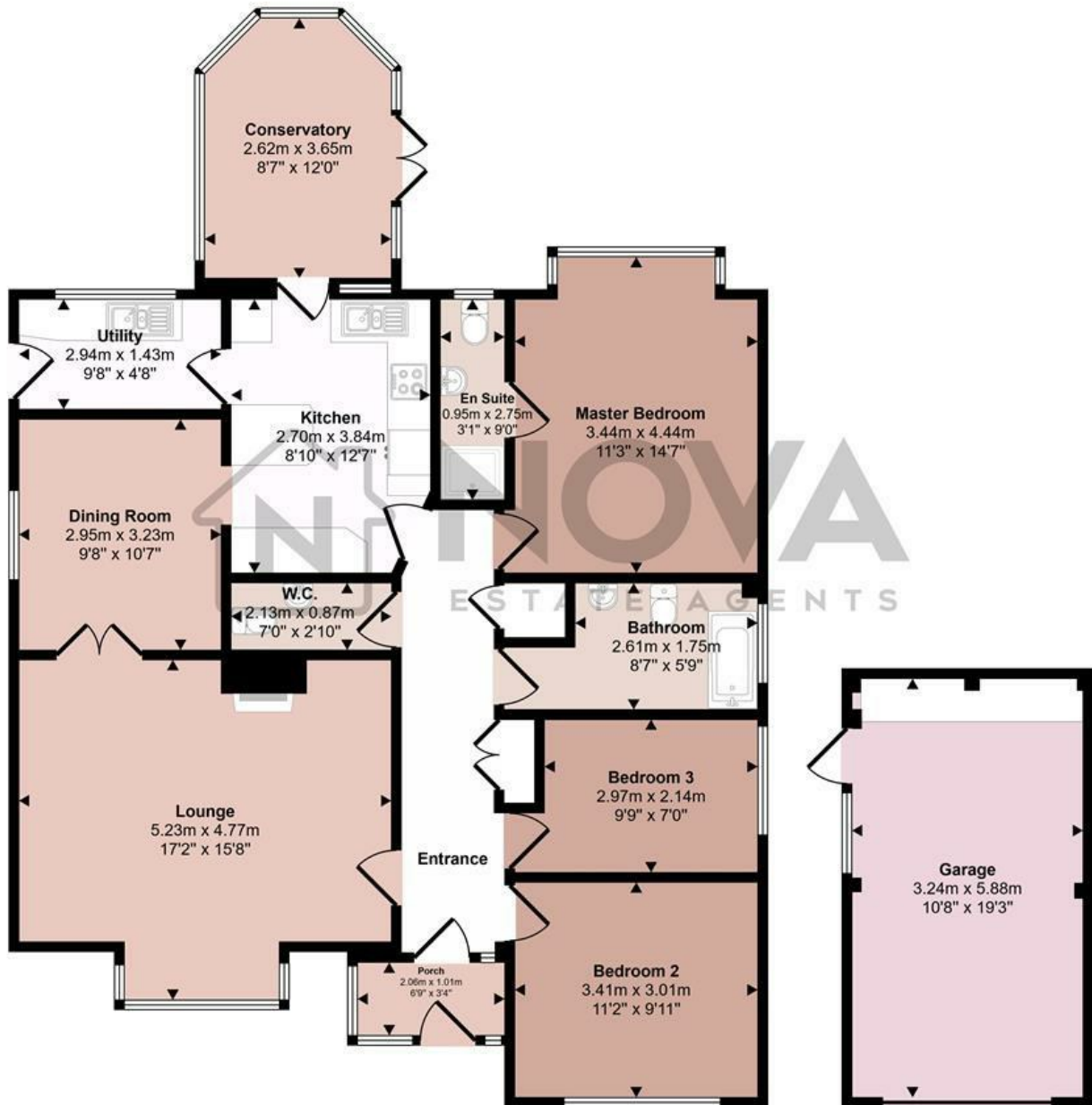
The property boasts generous and versatile accommodation throughout, including an impressive lounge ideal for both everyday living and entertaining, a separate dining room and a fitted kitchen with an extensive range of cabinetry and ample worktop space. A separate utility room provides additional convenience and practicality.

A particular highlight of the home is the bright and inviting conservatory, which enjoys pleasant views over the beautifully landscaped rear garden and creates an ideal space for relaxing all year round. Further accommodation includes a cloakroom and a spacious family bathroom.

- Nova Estate Agents
- Press Play Button For 360° Walkaround Tour
- Large 3 Bedroom Bungalow With Space To Extend STPP
- Chain Free
- Garage, Car Port and Driveway
- Cloakroom
- Conservatory
- 2 Reception rooms
- Utility Room
- Ensuite To Master Bedroom

£425,000

Approx Gross Internal Area
136 sq m / 1462 sq ft



Floorplan
Approx 117 sq m / 1257 sq ft

Garage
Approx 19 sq m / 205 sq ft

This floorplan is only for illustrative purposes and is not to scale. Measurements of rooms, doors, windows, and any items are approximate and no responsibility is taken for any error, omission or mis-statement. Icons of items such as bathroom suites are representations only and may not look like the real items. Made with Made Snappy 360.

| Energy Efficiency Rating | | Current | Potential |
|---|-------------------------|---------|-----------|
| Very energy efficient - lower running costs | | | |
| (92 plus) A | | | |
| (81-91) B | | | 86 |
| (69-80) C | | 72 | |
| (55-68) D | | | |
| (39-54) E | | | |
| (21-38) F | | | |
| (1-20) G | | | |
| Not energy efficient - higher running costs | | | |
| England & Wales | EU Directive 2002/91/EC | | |